

Population Health Promotion Annual Report



July 2023 - June 2024

WPHU advanced action in the three endorsed priority areas:

Healthier eating and food systems

Vaping and tobacco

Climate change and health

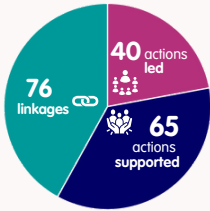
1,284,564 people live in the WPHU catchment, including **9,184** who identify as Aboriginal and/or Torres Strait Islander
39% were born overseas
44.8% of residents within the catchment speak a language other than English

Strengthening partnerships with 101 organisations through 316 collaborations

WPHU Catchment Plan
 2,021 views
 950 downloads

WPHU's impact using the **Lead Support Link framework**

Building networks and community capacity through direct outreach and community engagement reaching **1,804** community, cultural and faith leaders and individuals from CALD communities, having the potential to reach **589,000** people in our priority populations.



91% of Action Group contributors rate the Action Groups as valuable for their organisation's work

It's really good to see holistic and catchment wide planning that is grounded in evidence
 Local partner

Impact of Population Health Promotion digital content:

reached **51,708** unique users on social media

had **4,183** views on WPHU website

Cultural adaptation of **72** INFANT resources
 Translated into the top **6** languages spoken by families in the WPHU Catchment with children aged 0-2 years
 A Victoria first, launched by the Minister for Health

Out and About Project: Snapshot of e-cigarette accessibility in Brimbank
 WPHU investigation finds 59 vape retailers across one local government area with **70%** of schools located less than 1km from a vape selling retailer

Building community climate resilience
 through education on topics including heat health and thunderstorm asthma and participating in the Advisory Group for Collaborative Action Plan for climate justice in Melbourne's west, coordinated by Jesuit Social Services

Delivering capacity building opportunities reaching **112** stakeholders including CEOs of our major partners by hosting

WPHU supported the transition to 'no smoking or no vaping' signs within **6** organisations in the catchment. **203** new signs introduced

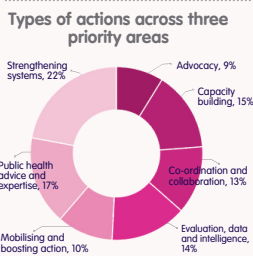
3 Health Economic Modelling webinars

Training, delivery and reach of the **evidence-based** INFANT program has significantly increased, with number of people trained to deliver INFANT sessions increasing by **103% - 95** sessions to **193** sessions

showing **healthcare cost savings of \$182 million** and **10,086** cases of heart disease averted if the 51,000 children in WPHU's catchment ate just one extra serve of vegetables per day

Successful VicHealth grant which brought together **5** LGAs and **3** community health organisations to explore **vaping prevention in CALD youth**

WPHU have provided incredible support with both their time and their resources to help us in our work. It has been so valuable to have the ability to connect with their team to seek additional information, feedback and brainstorm ways to achieve common goals
 Local partner



WPHU has identified **4** key domains needed to support self-determined health and wellbeing outcomes for **Aboriginal and Torres Strait Islander** communities across the WPHU catchment